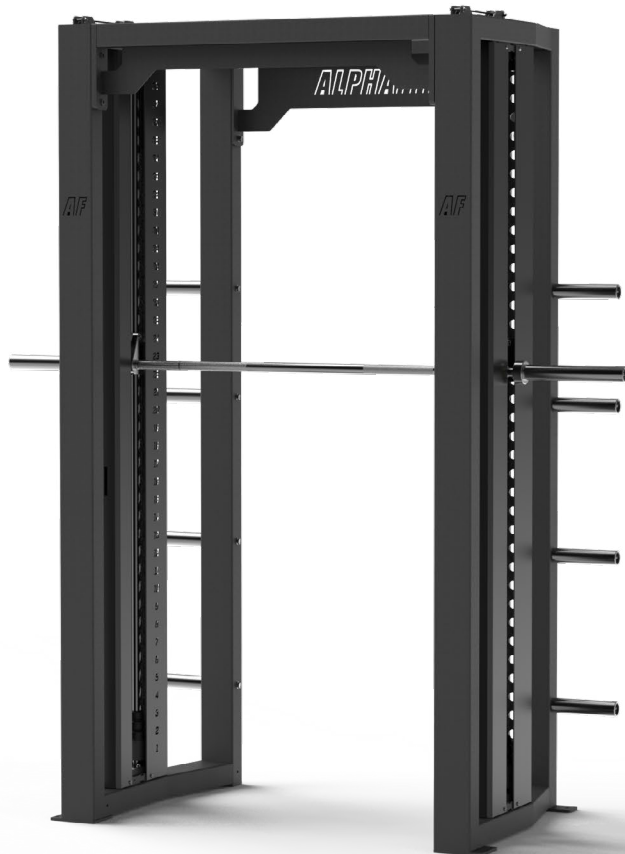


# ALPHAFIT®

## CORE VERTICAL SMITH MACHINE



### 1 | COMPACT DESIGN THAT DOESN'T COMPROMISE ON FUNCTIONALITY

With its compact footprint, open walk-through design and eight pins for close storage, the Core Vertical Smith Machine is for serious plate loaded strength training. One of the tallest machines on the market, it's designed for a 95<sup>th</sup> percentile male to overhead press with full extension. Its minimum bar height is one of the lowest seen, allowing you to comfortably deadlift with ease.

### 3 | START OFF LIGHT WITH THE 10KG RESISTANCE BARBELL

The counterweighted barbell has a maximum racking height of 2320mm and can be stacked with up to six 25kg weight plates on each sleeve. The bar is large enough for wide grip exercises, features single IWF markings and soft touch knurling for maximum comfort when lifting. Mimicking an Olympic bar, it also features independently rotating sleeves, eliminating the inertia from weight plates when racking.

### 5 | OPTIONAL TOP STOP + LOCKOUT ADD-ON FEATURES FOR EASE

The Top Stop feature allows you to set a top limit for the barbell, which is perfect for overhead press, where you don't want full extension. The Lockout feature prevents the barbell from accidentally catching on the racking system mid set, allowing for free uninterrupted motion in your workout.

### 2 | 0° FRAME ANGLE FOR MORE ACCURATE BIOMECHANIC TESTING

This Core Vertical Smith Machine's frame allows for force pad testing and gathering anthropometric data. With no angled force or side loads, this unit can accurately measure athletes' performance in isolated movements. This style of machine ensures the barbell's glide path remains in a straight line for pressing or squatting, ideal for elite lifters where less stabilisation is required.

### 4 | SAFETY FEATURES TO HELP YOU SQUAT AND PRESS HEAVY

Load rated to 300kg with 32 racking positions, feel confident securely nesting the bar with closer catch positions than others on the market. The Core Vertical Smith Machine also features drop stops that can be used as a spotter across the full range of the machine. The safety covers protect moving parts while still allowing the user to clearly see the catch racking positions.

### 6 | PROUDLY MADE IN AUSTRALIA, CUSTOMISE FOR YOUR NEEDS

The Core Vertical Smith Machine is 100% Australian made, allowing us to offer an unbeatable level of customisation including colour, branding and accessories. Easily create the best setup for your unique space and training requirements.

Standard model pictured - Core Vertical Smith Machine in Charcoal Grey. Custom configurations, colours and branding available. Contact your sales representative for more information.



Learn more at [alphafit.com.au/core-vertical-smith-machine](https://alphafit.com.au/core-vertical-smith-machine)

# ALPHAFIT®

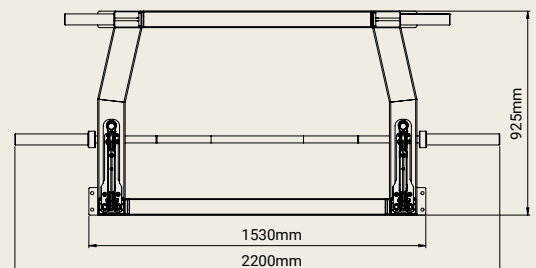
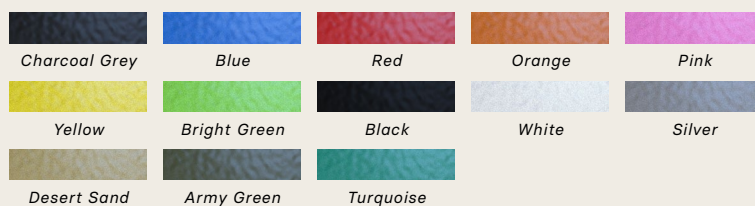


**DON'T BE INTIMIDATED BY THIS EPIC SMITH MACHINE. DESIGNED AND ENGINEERED IN AUSTRALIA WITH PEAK PERFORMANCE AND AESTHETICS IN MIND, THIS PRODUCT WILL BE THE MOST SORT AFTER PIECE OF EQUIPMENT IN YOUR COMMERCIAL GYM, SPECIALTY STRENGTH OR REHAB FACILITY.**



## CORE VERTICAL SMITH MACHINE SPECIFICATIONS

<b>Product Dimensions (L x W x H):</b>	925mm x 2200mm x 2620mm
<b>Product Weight:</b>	410kg
<b>Unloaded Barbell Weight:</b>	10kg
<b>Machine Load Rate:</b>	300kg (150kg of weight plates each side)
<b>Racking Positions:</b>	32 positions (60mm increments)
<b>Total Barbell Travel Range:</b>	1970mm (without Top Stop feature)
<b>Warranty:</b>	'Built Not Bought' warranty
<b>Standard Colour Options:</b>	Choose from 13 colours
<b>Installation:</b>	Recommended to be bolted to the floor



Learn more at [alphafit.com.au/core-vertical-smith-machine](http://alphafit.com.au/core-vertical-smith-machine)

**ALPHAFIT®**

Document No: MKT1083