

# ALPHAFIT®



## CORE HIGH LOW TOWER

### 1 | BUILD YOUR OWN CUSTOM CABLE SOLUTION WITH MULTIPLE UPGRADES

Customise your rig, cage or multistation setup with the Core High Low Row Tower. Designed to adapt and grow with you into the future, it has never been easier to upgrade your equipment.

### 3 | FIT FOR PURPOSE WITH A SLEEK, MODULAR DESIGN

The Core High Low Tower's sleek and compact design will help you achieve both an aesthetic and practical gym layout. Have the option to switch out the 13mm hole upright for a 25mm hole upright, allowing you to use various attachments.

### 5 | DESIGNED, ENGINEERED AND TESTED WITH SAFETY IN MIND

The Core Lat Pull Low Row Tower is industry-leading in guarding and safety with a fully enclosed weight stack. Intentionally designed with floor space and adjustability in mind, AlphaFit's Core High Low Row is fit for purpose and ready to take your training experience to the next level.

### 2 | FEATURES AN ADJUSTABLE PULLEY WITH 36 HEIGHT POSITIONS

The Core High Low Cable Tower features an adjustable torley with pull-pin delivering consistent and smooth movement with the ability to adjust to 36 different height positions.

### 4 | PIN LOADED WEIGHT THAT ALLOWS FOR PROGRESSIVE OVERLOAD

The Core High Low Tower includes 75kg of cable weight, and is adjustable in 2.5kg increments, the finest weight adjustment to allow for progressive overload and the ultimate training performance.

### 6 | PROUDLY MADE IN AUSTRALIA, CUSTOMISE TO YOUR NEEDS

The Core High Low Tower is 100% Australian made, allowing us to offer an unbeatable level of customisation including colour, branding and accessories. Train your way with market-leading equipment that's adapted to your requirements.

*Standard model pictured - Core High Low Tower in Charcoal Grey. Custom configurations and colours available. Contact your sales representative for more information.*

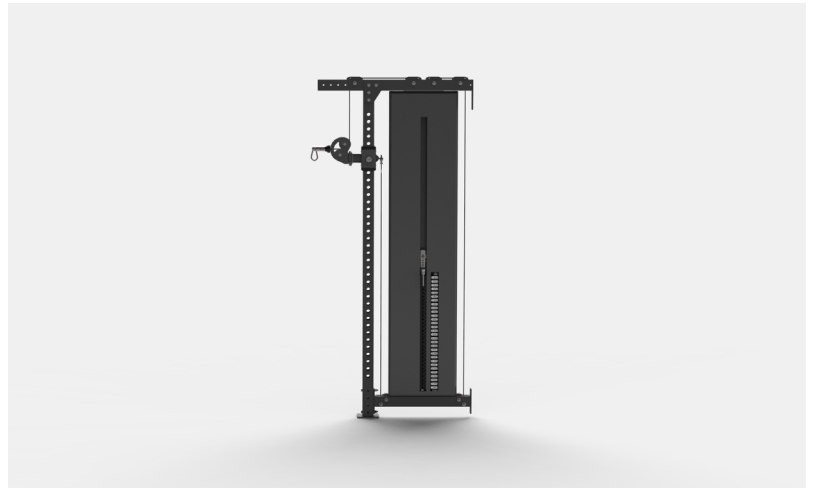


Learn more at [alphafit.com.au/core-high-low-cable-tower](https://alphafit.com.au/core-high-low-cable-tower)

# ALPHAFIT®



UNIQUE TO THE MARKET WITH AN ADJUSTABLE PULLEY TO ACCOMODATE YOUR TRAINING NEEDS. FIT FOR HIGH PERFORMANCE, THIS MODULAR DESIGN KEEPS PERFORMANCE, SAFETY AND AESTHETICS IN MIND FOR ALL ATHLETES.



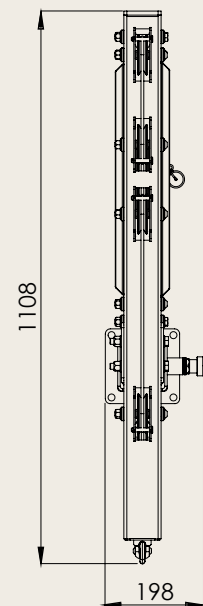
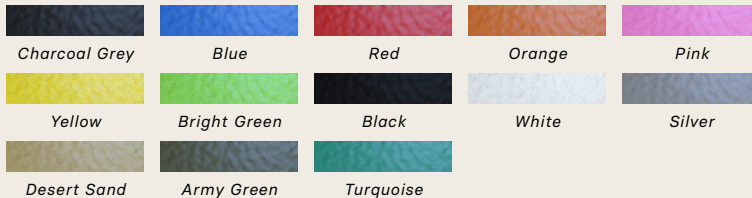
## CORE HIGH LOW TOWER SPECIFICATIONS

**Product Dimensions (L x W x H):** 1065mm x 180mm x 2340mm

**Product Weight:** 220 kg

**Warranty:** 'Built Not Bought' warranty

**Standard Colour Options:** Choose from 13 colours



Learn more at [alphafit.com.au/core-high-low-cable-tower](https://alphafit.com.au/core-high-low-cable-tower)

**ALPHAFIT**<sup>®</sup>